



WESTERN INFRABUILD PRODUCTS LLP.

GYPSUM PLASTERS • FALSE CEILING • DRY WALL
FLUSH DOORS • WALL PUTTY



SPECIALIST IN BUILDING AND INTERIOR PRODUCTS

Manufacturers of

- G.I. FRAMING FOR CEILING SYSTEMS
- G.I. FRAMING FOR PARTITION SYSTEMS
- G.I. FRAMING FOR WALL LININGS
- GYPSUM PLASTERS
- BONDING AGENT
- WALL PUTTY
- FLUSH DOORS
- FIRE DOORS
- LAMINATED DOORS



VISION, MISSION AND CORE VALUES

VISION

To become a preferred choice for interior building products, in the construction industry, by providing value engineered & cost effective products, systems and solutions.

MISSION

To create an organisation, which believes in continuous improvement, profitable growth and superior customer service, there by benefiting both stake holders and employees.

OUR CORE VALUES

- High on integrity
- Provide superior quality products
- Mutual respect towards everyone
- Proactive approach
- Customer oriented

OUR MANAGEMENT

COMPANY PROFILE

Western Infrabuild Products Llp. was incorporated in the year 2000 and since then has been a major player in the Gypsum industry for quite some time. From being an owner driven company to being professionally managed, this organisation has adopted change in its approach, not only to the market but also within its own team, to adapt to the challenging market situations and grow.

Today, this organisation consists of different teams, handling independent activities ranging from production, admin & finance and sales and business development. In an effort to provide good customer service, there are teams which are dedicated to handle logistics and supply chain. Under the able leadership of the founding member Mr. Ashfaque Khan, Western building products is aligned to take on the challenges and pressure of business making sure that there is growth in sales and profitability.



Mr. Ashfaque Khan started his professional journey at a very young age and has taken the company to profitability in a very short span of time.

He has proved himself to be visionary and has dedicated time and effort in team building, towards different areas of business, with an eye to provide superior customer service and improve efficiency.

Under the leadership of Mr. Ashfaque Khan, Western Infrabuild Products Llp. has become a fast growing manufacturer of Galvanized framing systems, Gypsum Plaster systems and Flush Door systems for residential and commercial establishments.



WESTERN™ Gypsum Plaster Range

(As per IS2547 Part I, 1976)



WESTERN ONE COAT	
Application	Plastered walls or concrete soffit.
Advantages	High purity, very smooth finish & higher coverage.
Packaging	25Kg HDPE Bags
Finished Product Color	Off white
Bulk Density	1050
Setting Time (Minutes)	10-15
Coverage in 6 mm Sq. Mtr/Ton	95 m ² / Ton
Surface Finish	Smooth
Workability	Easier
Compressive Strength (Kg/cm ²)	70-75

WESTERN CLASSIC P	
Application	Bare Brick or concrete surface with normal suction background.
Advantages	Direct application on brick wall, strong bonding strength, high coverage with smooth finish.
Packaging	25 Kg HDPE Bags
Finished Product Color	White
Bulk Density	725
Setting Time (Minutes)	15-20
Coverage in 12mm Sq. Mtr/Ton	67-70m ² / Ton
Surface Finish	Very Smooth
Workability	Easier
Compressive Strength (Kg/cm ²)	68-72



WESTERN CLASSIC V	
Application	Bare Brick or concrete surface with normal suction background.
Advantages	Direct application on brick wall, strong bonding strength, high coverage with smooth finish.
Packaging	25 Kg HDPE Bags
Finished Product Color	Off white
Bulk Density	770
Setting Time (Minutes)	18-22
Coverage in 12mm Sq. Mtr/Ton	62-65m ² / Ton
Surface Finish	Smooth
Workability	Easy
Compressive Strength (Kg/cm ²)	95-101



ADVANTAGES OF GYPSUM PLASTER

Comparison between Western Gypsum Plaster & Normal Cement Plaster

TRADITIONAL SAND – CEMENT PLASTER	WESTERN GYPSUM PLASTER	ADVANTAGES
Continuous monitoring required while mixing	No continuous monitoring required as it is premixed	Western being pre mixed plaster gives continuous finish on walls
Pre & Post curing in required on walls	No curing required	It saves time & water also
After traditional plaster, due to rough finish POP finish is required	No POP finish required	No additional cost of POP finish & thus saves time & money
Reflects sound & does not control humidity	Absorbs sound & controls humidity	Makes wall more soundproof
High percentage of wastage during application	Nominal wastage during application	Less amount of raw material wastage
Non resistant to shrinkage cracks	Resistant to shrinkage cracks	Western gives cracks free walls

Saving Chart as Compared To Traditional Plaster per sq. feet

	NORMAL PLASTER *	GYPSUM PLASTER* /SQ.FT.
Material Cost of plaster/sq.feet	11.00	13.00
Labour cost for plaster/sq.feet	11.00	10.00
POP material Cost of/sq. ft.	8.00	NIL
POP Labour per sq. ft.	8.00	NIL
TOTAL COST	38.00	23.00

Net 39% Savings

* The above are indicative rates & may vary from time to time as per site conditions.



- EVER LASTING**
 Western gypsum plaster contains no harmful chemicals & hence it retains its composition & structure for many years.
- PREMIXED PLASTER**
 Western Plaster are premixed with gypsum & other ingredients & hence do not need Cement, Sand, POP, Curing, White wash on it.
- EARTHQUAKE RESISTENCE**
 Western Plasters having inherent properties of light weight of gypsum, There is always less dead load on structure & hence good for earthquake resistance.
- TIME SAVING**
 Western Gypsum Plaster is very much time saving as it does not require any curing and it's setting & drying is very fast compared to cement plasters. Hence less wastage of cement, labour & time.
- THERMAL INSULATION**
 Western Gypsum Plaster contains thermal insulation properties & low heat conductivity. Keeps room cool & ensures energy & power saving.
- SOUND ABSORBENT**
 Western Gypsum Plaster has unique acoustical properties of absorbing airborne sounds & it is a leading material used for sound absorbent properties.
- ANTI-FUNGUS & TERMITE FREE**
 Western Gypsum Plaster does not allow any fungus or termite to mould growth inside walls & hence very much recommended for hospitals, clinics & all other applications.
- FIRE RESISTING**
 Western Gypsum Plaster is non-combustible & in event of fire, it will act as a barrier and will protect the RCC structure etc.
- TOTAL STRENGTH**
 Once Western Gypsum Plaster is set it exhibits high tensile & flexural strength. They are less prone to cracking, de-bonding due to thermal & tensile movements of background.
- BONDING PROPERTIES**
 Western Gypsum Plaster has good adhesive & bonding properties & it can be applied on any walls like RCC ceiling, Clay bricks, AA blocks, Solid & hollow concrete blocks.
- SHRINKAGE CRACKS FREE**
 Western Gypsum Plaster is having easy workability & due to pre mix plaster it offers uniform setting time. It does not shrink (unlike cement) during the drying out & hardening process & hence is always free from inherent cracks.
- AESTHETICS**
 Western Gypsum Plaster gives excellent finish on walls & provide smooth interior finish on walls & ceilings. Also grooves, sharp & round edge & other decorative finishes are possible due to easy workability.
- DRY CONSTRUCTION**
 Consumes 95% less water than masonry construction.
- ENVIRONMENT FRIENDLY**
 Green product which is recyclable and is made of environment friendly material.

WESTERN CLASSIC BOND™ RAPID BOND

Description:

Western Classic Super Gyp Bond is a green colored, high viscous solution which provides mechanical as well as chemical bonding for gypsum based materials. It gives very high bond strength to all gypsum based materials. It meets the bond strength requirement of 855270. It has great tensile and flexural strength.

Advantages:

- Provides chemical as well as mechanical bond
- Easy to use & apply
- Versatile & economical
- Single component easily gauged
- Excellent adhesion to gypsum materials
- Higher flexibility
- Non toxic
- Improved flexural & tensile properties allow for thin application
- Increased durability

Application data:

- Application methods: Brush
- Thinning (volume): Not required. Maximum upto 20% in specific cases
- Thinner/ cleaner: Water

Recommended system:

- Textured finish: 1 coat
- 10 - 12 mm of gypsum plaster (any make)



Specification Direction for use:

- Colour: Green
- Finish: Texture
- Solids: 80.00±2%
- Specific gravity Kg/lt: 1.8±0.05
- Adhesion strength: 1.01 N/mm²
- Theoretical spreading rate: 50~ 60 sq.ft/kg/coat
- Drying time@30° c: Temperature, humidity, air movement, film thickness and number of coats all affects the drying time.
- Touch dry (hours): 2
- Dry to recoat (hours): 16~ 18
- Shelf life: 1 year minimum in original sealed containers with proper storage conditions

(Actual Spreading rate may vary depending on substrate condition & application method.)

Direction for use:

- Remove all loose materials, paints, and oily deposits from the application surface.
- Mix thoroughly the contents of the pack, such that the fine aggregates are mixed properly in the solution. Apply Western Classic Gyp Bond in single coat on required surface. Let it dry for 24 hrs and then start rendering gypsum material. The maximum thickness in case of ceilings is 10- 12mm.

Precautions:

- Please do not apply Indicon Western Classic on wet surfaces.
- Do not apply on door frames, window frames and other decorative material, since once it dries it has to be scrapped or washed.
- Western Classic Gyp Bond is nontoxic, nonhazardous, usual precautions like wearing gloves when handling should be followed. Accidental splashes on skin and in eyes should be washed off with plenty of plain water.

Shipping:

Freight classification	Packaging	Flash point
Paint	5Kgs, 15 Kgs, 25 Kgs.	Water





WESTERN SMART WALL™

Western Smart wall is White Cement based putty specially developed as a finish coat to cover unevenness and pinholes in plastered surfaces and to make the walls/ceilings ready for painting. As it is white, it can be treated as a base coat for painting. It is lime-free. It contains minerals, white cement and polymers.

APPLICATION DATA

Dampen the surface to be plastered with clean water. Allow excess water to drain off. Using a steel trowel/blade, apply the above mix to a thickness of about 1-2mm. Level and smoothen the surface. Cure the first coat lightly after it dries. Apply the second coat after the first coat has fully dried and set. Cure the second coat lightly for two days. The thickness of each coat should not exceed 2mm and total plaster thickness should not exceed 3mm. Smoothen with a steel trowel. Sand paper if so desired.

Surfaces preparation: Clean loose particles, dirt, grease and traces of foreign material from the surface, if necessary, by using sand paper, or by chipping. For loose plaster areas, remove the defective material and re-plaster the area. For ceilings/walls, which are not even, re-plaster it to make them even. Fill up any cracks in base plaster.

Method of Application: Dampen the surface to be plastered with clean water. Allow excess water to drain off. Using a steel trowel/blade, apply the above mix to a thickness of about 1-2mm. level and smoothen the surface. Cure the first coat lightly after it dries. Apply the second coat after the first coat has fully dried and set. Cure the second coat lightly for two days. The thickness of each coat should not exceed 2mm and total plaster thickness should not exceed 3mm. Smoothen with a steel trowel. Sand paper if so desired.

Finishing:

Western Smart wall gives smooth finish and serves as ideal substrate for applications paints.

Features:

Excellent bonding to the base plaster/ concrete. Reduction in cracking, can be used on new as well as old walls/ceiling.

Benefits:

Reduced paint consumption, Saves Time, Cost effective.

Covering capacity:

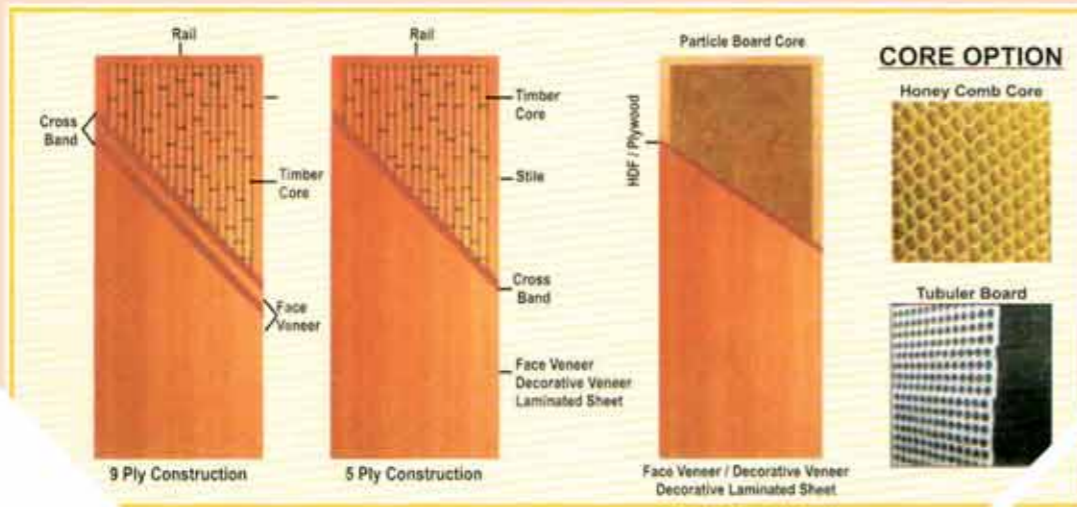
6 to 10 sq.ft. per kg. per coat.

Depending on the surface and application method.

Product Data:

Smooth





WESTERN DOORS

WESTERN Flush Door:

We are immensely proud to introduce our self as an innovative manufacturer and supplier of Flush Doors, Laminated Doors, Decorative Veneer Doors, Fire Retardant Doors, Moulded Panel Doors etc. These quality products offered by us under the name "WESTERN", trusted & reliable brand for many satisfied users. For more than a decade, we have been involved in manufacturing superior quality doors. With manufacturing strength & advanced technology our company has passed certificate of Bureau of Indian Standard

Infrastructure :

We are supported by our state of art manufacturing unit that is equipped with advanced high-tech machinery & skilled experienced workforce. Being concerned about the quality of our product, we have established a quality control laboratory which is managed by an expert R & D team, they look after the entire process of manufacturing from selection of raw material to making of finished goods.

Customer Care:

Customer's satisfaction is our ultimate aim. We are able to understand the changing need & requirements of customers, their business experience with us will be long lasting.

Flush Door:

Flush Doors are manufactured as per Indian Standard IS 2202. A Solid core Flush Door consist of blockboard core construction with crossband and faceveneer bonded with phenol-formaldehyde (PF) synthetic resin by hydraulic hot-process method under high pressure and uniform temperature which makes our Doors structurally strong and dimensionally stable.

Fire Retardant Doors

We are among the few Fire Retardant Doors manufacturers. These doors are widely used in construction of highrise buildings. Advance technology & chemicals are used in manufacturing of these doors. We also have a technology of mineral heat insulator to increase fire retardation.

This Product is available in three specification.

- 30 minute Fire Retardant Doors
- 60 minute Fire Retardant Doors
- 120 minute Fire Retardant Doors

30 Minute FR Door:

Specially chemically treated crossbad + faceveneer 5 to 6mm thick layered on both side.

60/120 Minute FR Door:

Mineral heat insulator and chemically treated Crossband + faceveneer 5 to 6mm thick layered on both side.

LAMINATED DOORS:

Our another key product is Laminated pressed on Flush Door under specially designed press design machine using PVA / Melamine resin. Since this Doors laminated with high-tech machines, its durability & finish is far better than those laminated manually by carpenters, also manual lamination process is Laborious & time consuming. We also provide freedom to our customers to have their own choice of laminates available in the market.



WESTERN STEEL RIPPLE

METAL FRAMING & ACCESSORIES

Western Steel a flagship company of Western Infrabuild Products Lp. was incorporated in the year 2000. Western Steel started as a trading company, dealing in various building products over a period. It was to provide their clients like architects, interior designers and turnkey interior contractors, with the best quality and economical metal profile for designing and execution of metal frame for ceiling, partition and wall cladding. Thus Western Steel brand has been introduced to their esteemed clients with a manufacturing facility at TALOJA, and a production

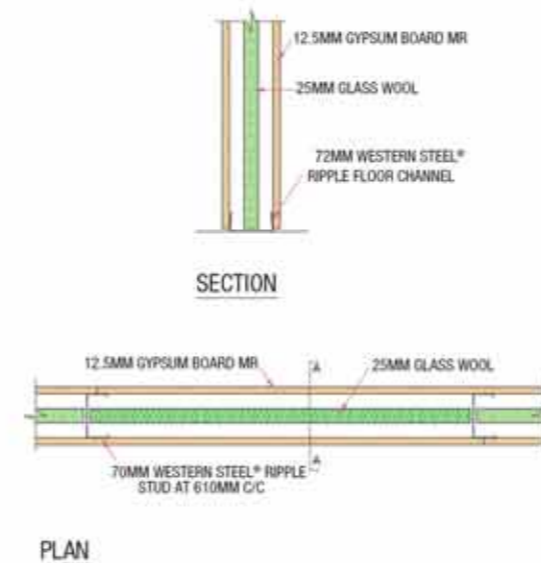
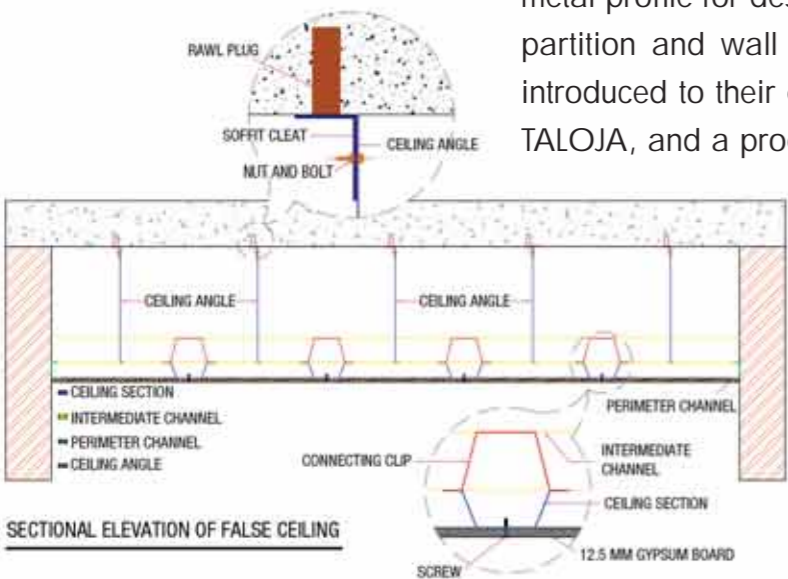
capacity 2400 mts per annum. Western Steel product is functionally a simple, elegant, superior safety standard, which has a high quality of Zinc coating of 120 gms/sqm both sides included, certified and tested exclusively by SGS India Pvt Ltd. This procedure is to protect against rusting from high humid condition.

Specification of Ceiling Systems®:

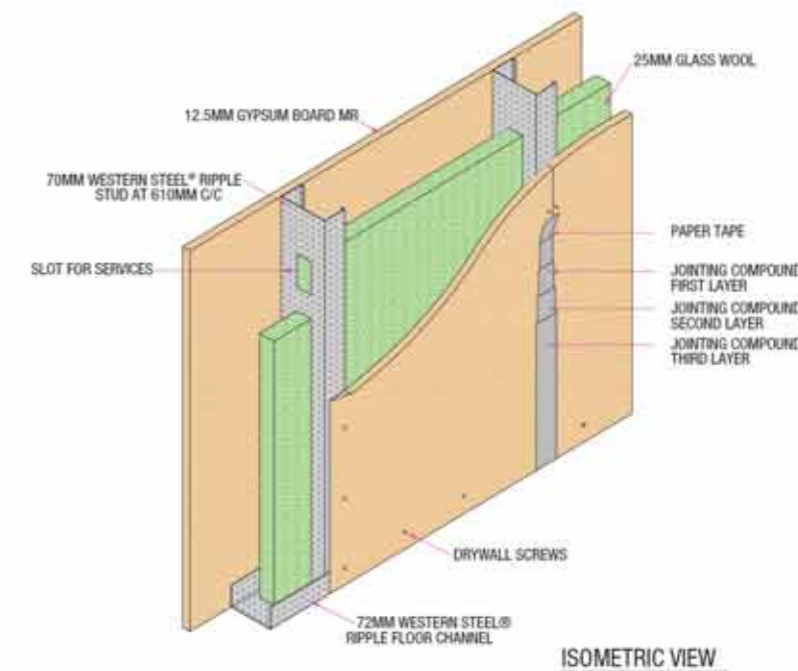
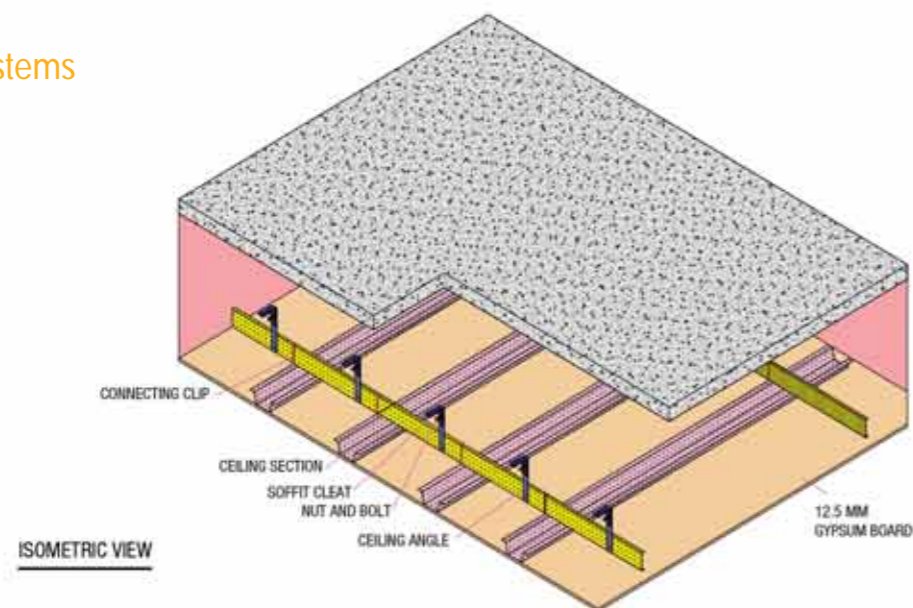
Framework consists of Western Steel Ripple™ perimeter channels (having one flange of 20mm and another flange of 30mm and a web of 27mm) screw fixed to the partition wall or brick wall, along the entire ceiling perimeter, using nylon sleeves and screws, at 610mm centres. The primary grid consists of Western Steel Ripple™ intermediate channels of size 45mm (with two flanges of 15mm each) suspended from the soffit at 1220mm centres with Western Steel Ripple™ ceiling angle (having one flange of 25mm & another flange of 10mm) anchored to the soffit at 1220mm centres using M6x40 anchor fastener. The secondary grid consists of Western Steel Ripple™ ceiling sections spaced at 457mm centres and fixed to the intermediate channels using a connecting clip. This ceiling framework is lined with 12.5mm gypsum boards screw fixed to the ceiling sections at 300 mm centres using 25mm needle point screws. The ceiling is given a flush finish by sealing the board joints using gypsum based jointing compound and joint tape.

Specification of Partition Systems®:

Providing and fixing drywall partition constructed using single framework consisting of Western Steel Ripple™ track sections of 72 x 32 x 32 x 0.55 TCT Floor and Ceiling channel respectively, which are anchored to Floor and top slab using M6x40 Anchors. Western steel Ripple™ C Stud 70 x 34 x 36 x 0.55 TCT to be placed at max 610mm c/c vertically. The steel framework must conform to a minimum coating class of ZN 120 GSM both sides included. This framework to be clad with layer of 12.5mm Regular Gypsum board fixed in staggered pattern on both sides using 25mm drywall screws respectively (spaced at 300mm centres). The cavity between the Gypsum boards is packed with Rockwool 48 kg/m3 density. The contractor to ensure that gypsum board joints shall be neatly finished by three coats of gypsum Jointing Compound and 50mm Joint Paper/Fibre Tape.



Installation systems



WESTERN Steel Products

Western Steel RIPPLE®

Floor and Ceiling Section

Application - Designed for securing wall studs at floor and ceiling junctions. Fixed to the floor and ceiling to accommodate Western Steel RIPPLE™ Studs

Dimensions in mm :
50 x 32 x 32 x 3660, 94 x 32 x 32 x 3660
72 x 32 x 32 x 3660, 148 x 32 x 32 x 3660

W Stud

Application - Used as the vertical support in wall framing. This is a specialist stud which will give high acoustic performance

Dimensions in mm : 92 x 41 x 44 x 3660
70 x 41 x 44 x 3660, 146 x 41 x 44 x 3660

U Stud

Application - Used as the vertical support in wall framing

Dimensions in mm : 70 x 34 x 36 x 3050, 48 x 34 x 36 x 2440, 70 x 34 x 36 x 3660
48 x 34 x 36 x 2745, 92 x 34 x 36 x 3050, 48 x 34 x 36 x 3050, 92 x 34 x 36 x 3660
48 x 34 x 36 x 3660, 146 x 34 x 36 x 3660

Fixing Section

Application - Used for a variety of applications including the provision of support for wall fixtures to studs and for cross bracing on twin framed walls. Fixed to metal studs using flat Pan head metal screws for attachment of heavy fixtures

Dimensions in mm : 99 x 9.5 x 9.5 x 0.91 x 2440

Western Steel RIPPLE®

Ceiling Section

Application
The main supporting section to fix plasterboard

Dimensions in mm : 80 x 26 x 51 x 3660

Application

Primary section to support the ceiling section

Dimensions in mm: 15 x 45 x 15 x 3660

Western Steel RIPPLE®

Perimeter Section

Application
Fix around walls / partitions

Dimensions in mm :
20 x 28 x 30 x 3660

Ceiling Hanger

Application
To provide suspensions from the structural soffit

Dimensions in mm :
25 x 10 x 3660

Western Steel Accessories

Connecting Clip

Application
Used to connect ceiling section or U section to intermediate channel or tube respectively

Dimensions in mm : 2.64

Drywall Screw

Application
Corrosion resistant self tapping zinc plated steel screws with countersunk cross – heads, supplied with screw driver bits. To fix plasterboard to metal framework

Dimensions in mm : 3.5x 35 [3.5 x 25 [3.5 x 50

Corner Beed

Application - Perforated galvanized metal bead for reinforcing external 90 degrees angles where maximum protection is required

Dimensions in mm : 25 x 25 x 2440 [25 x 25 x 3660

CLIENTS ASSOCIATED WITH WESTERN GYPSUM PLASTERS

ARCHITECT USING WESTERN STEEL FALSE CEILING SYSTEMS LLP

- | | |
|--|---|
| 1) S.S.A.
Kohinoor Hospital, Mumbai. | 11) PARILARTAN DESIGNING PVT. LTD.
Avanta, Platina Building, Bandra Mumbai |
| 2) PRAKASH MANKAR
GRAND BHAGAWATI HOTEL- Sachin Surat | 12) HITEN SETHI
Lestersoft Limited- Devnar Mumbai |
| 3) FAB INTERIOR- DELHI
Aditya Mansarowar Hotel - Hyderabad | 13) SANKALPAN INFRASTRUCTURE PVT. LTD.
Fullerton India Ltd. Supreme IT Park Powai |
| 4) THOM CATALLO-SINGAPORE
SAHIL RESPORT- RADISON HOTEL-Alibagh | 14) NPAPL
Country Club- Andheri (West) |
| 5) S.S.A.
Sayaji Hotel- Pune | 15) SANKALPAN INFRASTRUCTURE PVT. LTD.
224, Business Park Vikhroli, Mumbai |
| 6) SPACE MATRIX
Reliance Media Building No. 03, Mindspace K. Raheja- Airoli | 16) BILLCARE
Shirohi Faon, Rajgurunagar, Pune- Nashik Highway, Khed, Pune.
Architect: Group Phi |
| 7) SANKALPAN INFRASTRUCTURE PVT. LTD.
Symphony Services Office- Pune | 17) KAYPEE PROJECT
Synchron Technologies Pvt. Ltd. Rajiv Gandhi Infotech Park, Pune. |
| 8) GROUP PHI
Billcare- Shirohi Gaon, Rajgurunagar, Pune- Nashik Highway, Khed, Pune | |
| 9) REZA KABUL
Ashapura Builder -Bandra- Mumbai | |
| 10) SANKALPAN INFRASTRUCTURE PVT. LTD
Bayer India- Powai | |

BUILDER & DEVELOPERS USING WESTERN STEEL FALSE CEILING SYSTEMS LLP

- | | |
|--|---|
| 1) OBEROI CONSTRUCTION
Mumbai. | 7) RAHEJA
Inorbit Mall, Pune |
| 2) HIRANANDANI
Builders & Developers | 8) NIYATI BUILDERS & DEVELOPERS
PUNE |
| 3) WADHAWA GROUP,
Builders & Developers | 9) MARKET CITY
Kamani Kurla, Mumbai |
| 4) RAHEJA CORP.
Builders & Developers | 10) AMAN NOORA TOWNSHIP,
Pune |
| 5) MAKER BUILDER
Open Theatre, BKC | 11) D.B. REALITY
Near Latchandi Height Goregaon (East) |
| 6) INDIA BULLS LIMITED | |

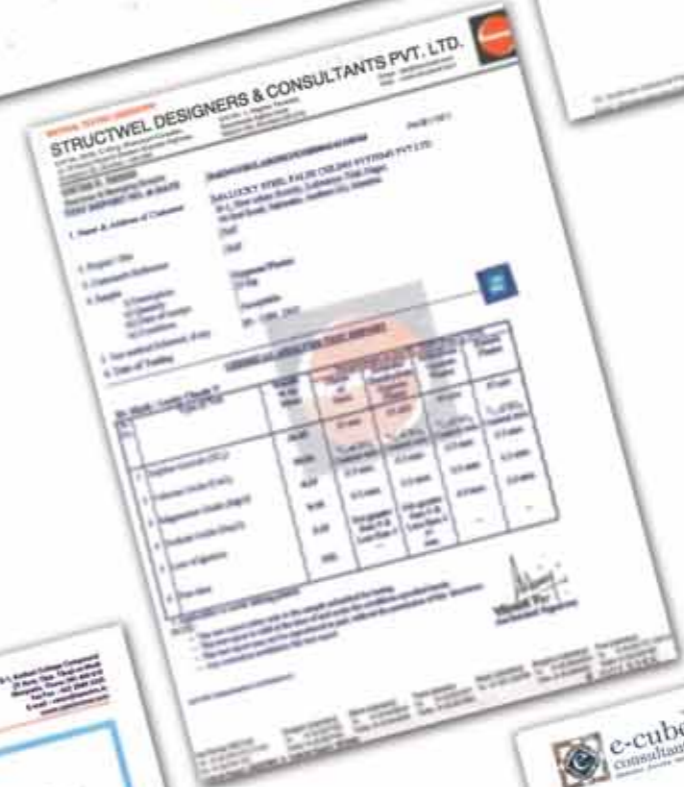
CLIENT USING WESTERN STEEL FALSE CEILING SYSTEMS LLP

- | | |
|---|---|
| 1) RELIANCE INDUSTRIES LTD.
Nocil Company, Ghansoli, Navi Mumbai.
Swadeshi Mills Compound, Chunabhatti, Mumbai. | 11) J.L. COLLEGE OF ENGINEERING & PHARMACY
Thane |
| 2) SHREE MAHAVEER JAIN CHARITRA.
Ratna Kalyan Ashram, Station Road, Songarh, Shihore, Bhavnagar, Gujrat. | 12) MAHINDRA & MAHINDRA
Chakan, Pune. Unica Building Solutions Pvt. Ltd. |
| 3) WNS.
LBS Marg, Vikroli, Mumbai. Indisign /Dimensions. | 13) N.G. JAIN & CO.
Landkraft Interior |
| 4) DONBOSCO AUDITORIUM.
Matunga, Mumbai. | 14) VOLKSWAGEN
Chakan, Pune. Unica Building Solutions Pvt. Ltd. |
| 5) SALASAR ENTERPRISES PVT. LTD.
Tibco Company, Manikchand Bldg, Near Le-Meridian Hotel, Shivajinagar, Pune | 15) INDUSIND BANK
Harizon Interior |
| 6) ESSEL GROUP (FUN REPUBLIC)
Near Laxmi Ind. Estate, Link Road, Andheri (West), Mumbai. | 16) HALLMARK BUSINESS CENTRE
Bharti Interior |
| 7) HEXAWARE TECHNOLOGIES LTD.
Hexaware Tower, Chennai. Vector Projects India Pvt. Ltd. | 17) J.P. INFRAPROJECTS
India Bulls Lower Parel, Mumbai |
| 8) STARGAZE.
Kurukshetra, Delhi | 18) GOAN HOTELS & CLUB PVT. LTD.
Bombolim Beach Resort, bambolim, Goa |
| 9) KOHINOOR HAS.
Mumbai. S.S.A. Architects | 19) INNOVATIVE VASTU NIRMAN PVT. LTD.
Cumin India Ltd., PDC, Phaltan Pune Road, Phaltan MIDC, Satara |
| 10) L & T
Chennai & Coimbatore | 20) JYOTI PLASTIC WORKS PVT. LTD.
Padrdi Paria Road, Near Paria High School, Dungri Udwada, Gujrat. |

CLIENTS USING WESTERN BRAND GYPSUM PLASTER.

- | | |
|---|---------------------------------------|
| 1) RAHEJA BUILDERS | 9) HDIL
KURLA,ANDHERI,NAHUR,VIRAR. |
| 2) OBEROI BUILDERS
Oberoi Garden- Mumbai | 10) LODHA |
| 3) L & T ECC DIVISON
Goregaon- Mumbai | 11) GODREJ PROPERTIES. |
| 4) SIDHI REAL ESTATE DEVELOPERS
Highland Garden, Thane | 12) DOSTI GROUP |
| 5) SHREE MURDHAR PROJECT
Bhivandi | 13) TATA HOUSING |
| 6) SHREE KRUPA BUILDERS
Parsik Nagar, kalwa | 14) RUNWAL GREENS |
| 7) VIDIYA PRASARAK MANDAL
Dahisar - Mumbai | 15) THE WADHWA GROUP |
| 8) GENNEXT HARDWARE
Mahalaxmi, Mumbai | 16) MAHINDRA LIFE SPACES |
| | 17) RAJESH LIFE SPACES |
| | 18) RNA CORP. |
| | 19) RELIANCE INDUSTRIES LIMITED |
| | 20) DB REALTY. |
| | 21) EKTA WORLD |

SOME OF OUR VALUED CUSTOMERS





WESTERN INFRABUILD PRODUCTS LLP.

Gypsum Plasters • False Ceiling • Dry Wall • Flush Doors • Wall Putty

Corporate Office

805, Jay Antriksh, Thakur House,
Makvana Road, Opp. Mittal Estate, Marol,
Andheri (East), Mumbai 400059.

TEL: 91-22-29202871-79 • www.wipindia.com

Dealers

Mumbai • Delhi • Bengaluru • Hyderabad • Pune • Goa • Surat • Ahmedabad • Palghar • Nashik

Factories

Taloja • Rajasthan

Branches

Hyderabad • Rajasthan